

## CHAPTER TWELVE – THE HELP FACILITY

The Help menu (Figure 12.1) offers you the following facilities:

- A summary of the AKT formal grammar.
- A list of all the tools available to AKT including any tools in the current User Tool file.
- A list of the publications on which this program is based.
- Information about the AKT version being used. (Quote for any problems or queries)

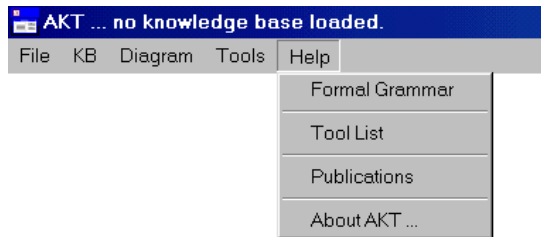


Figure 12.1 The Help menu

### 12.1 THE FORMAL GRAMMAR

The formal grammar in Figure 12.2 is exactly as in Table 4.1 in Chapter 4. It is available via the **Help** menu so that, when formalising unitary statements, you can quickly refer to it to see if the format of the unitary statement you are proposing is valid.

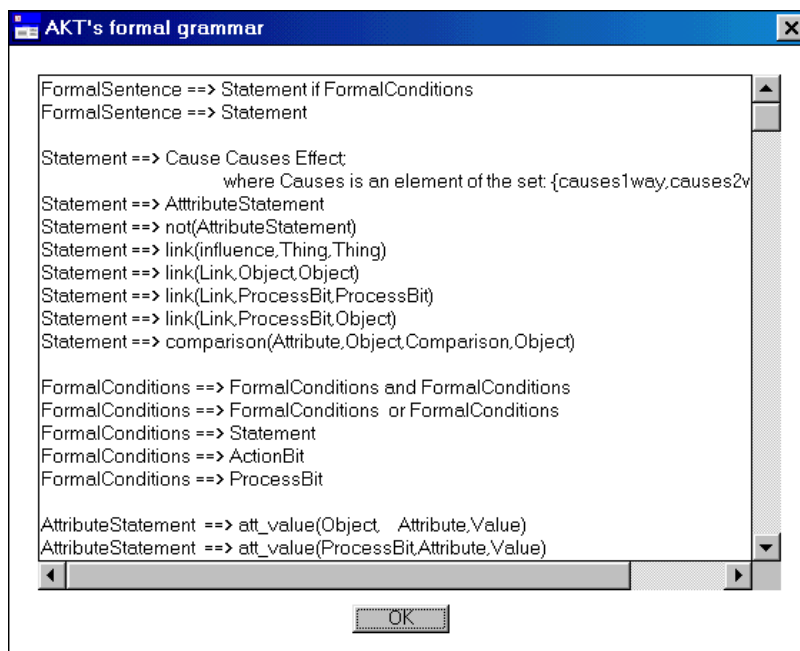
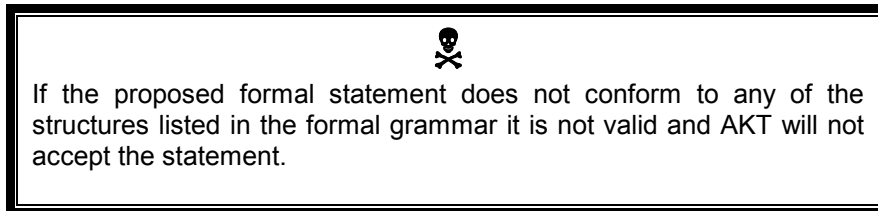


Figure 12.2 The formal grammar as it appears in the **Help** menu

## 12.2 THE TOOL LIST

The 'Tool Information' dialog box (Figure 12.3) is simply an alphabetically ordered list of the tools supplied with AKT plus any user tools if loaded. The list gives the name of the tool, the names of the parameters, the category to which it belongs and a description of its function.

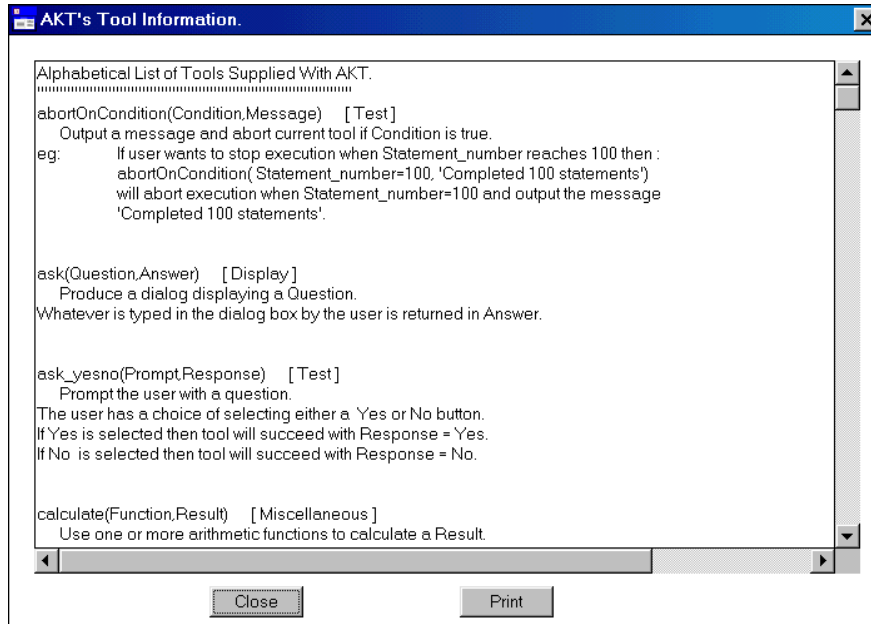


Figure 12.3 'Tool Information' accessed via the Help menu

Once you are familiar with writing tools it is of use as a short cut for copying primitives, control structures and systems tools and pasting them into your own tools. To do this, highlight the tool name, (but *not* the tool category or description) as demonstrated in Figure 11.3 with **attribute\_values(Kb,Attribute,Values)** and press **Ctrl c**. You then return to the 'tool body' of the 'New Tool' dialog box and press **Ctrl v** to paste it in as described above in 'Method 2', Chapter 10.2.1.

### 12.2.1 SAVING 'TOOL INFORMATION' AND PRINTING

To save the whole 'Tool Information' list to a text file press **Print**. The following message appears (Figure 12.4). If you select **Yes**, you will be prompted for the name of a text file and the directory and folder in which to place it. If you select **No**, the 'Print' menu will appear in which you can select the orientation, number of copies, etc.

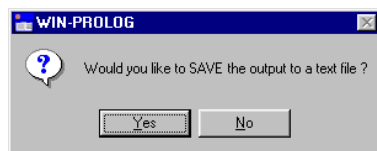


Figure 12.4 Message asking you whether you want to save the 'Tool Information' to a file

## 12.3 SOME POPULAR MISTAKES AND DIFFICULTIES

☹ *My knowledge base won't open properly.*

☺ *This is usually a problem with large knowledge bases. Check that you have increased the memory available to AKT by adding the correct parameters to the executable shortcut, as described on page iii, 'How to Install AKT' at the front of this manual.*

☹ *I get the error message '1 error(s) during compilation' when trying to load a knowledge base*

☺ *Is often happens when a knowledge base has been emailed to you. The reason for it is obscure, but it is easy to fix:*

*Open Wordpad or any other text program. Open your knowledge base within that program. Scroll down to the very last line of the knowledge base. Make sure that the last line has a full stop at the end. Then press carriage return (↵). Save the file and then close it. Open AKT and try to open the knowledge base. It should now work.*

☹ *My knowledge base opens but all my statements are missing.*

☺ *There are three possible reasons for this:*

- 1) *You saved all your statements but did not save your knowledge base (using Save KB from the main KB menu). If you do not save your knowledge base at the end of a session, you will lose all the work you have done since you last saved the knowledge base properly.*
- 2) *You have changed the name of your knowledge base outside the AKT program (using Windows Explorer for example). You should only change the name of your knowledge base from within the program by selecting **Save KB As** from the main **KB** menu. To get the statements back, revert to the old knowledge base name.*
- 3) *You are trying to open a knowledge base in an earlier version of the program than it was created in. You can open a knowledge base created in an earlier version of the program in a later version of the program, but you can't do it the other way round, i.e. open an knowledge base created in a later version of the program in an earlier version.*

☹ *My knowledge base has jammed.*

☺ *This sometimes happens if you have too many windows open at once. To get out of a jam, select **Ctrl + Break**.*

☹ *In diagrams I cannot move some of the Actions nodes.*

☺ *This is a quirk within Prolog. To circumvent it, make sure that both the vertical and horizontal scroll bars are on zero. Select **Zoom Out**. When the action node you wish to move appears on the screen, click on it with the left mouse button and drag it. It will now move.*

☹ *When I load a knowledge base, I get lots of messages before the Welcome Page appears.*

☺ *When a knowledge base is opened, the program checks for duplicate statements and inferred duplicated statements (by checking the causes2way statements). Usually the messages are for your information only.*

☹ *When I load a knowledge base, I get the message 'Cannot generate an inferred statement from statement 42' (for example)*

☺ *This means that you have entered 'causes2way' where the statement cannot be a causes2way statement. You have to check that both parts of the statement are attribute value statements and both parts contain the values decrease or increase. If this is not the case, then you much change the statement to a causes1way statement.*

## 12.4 ABOUT AKT

Finally, the last option in the Help menu is a small dialog (Figure 12.5) containing the version number of AKT and the Web address where AKT files and information are available. There is also an acknowledgement of the people involved in the development of AKT.

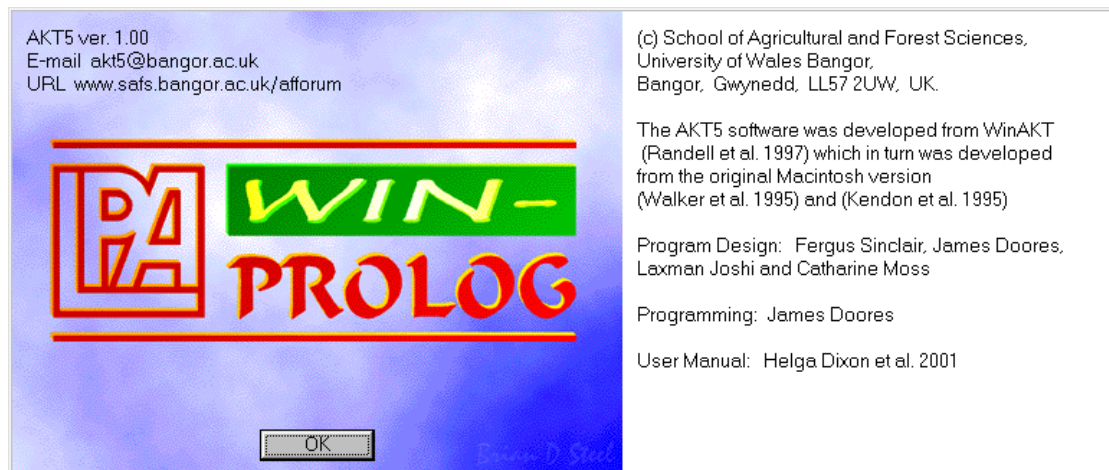


Figure 12.5 Details about the authorship of AKT

***As a team, may we take this opportunity to wish you all possible success with AKT, and may it act as a useful and user-friendly support tool in your research and development work and your quest for local ecological knowledge. If you have any difficulties or queries, you can contact us directly at [akt5@bangor.ac.uk](mailto:akt5@bangor.ac.uk).***