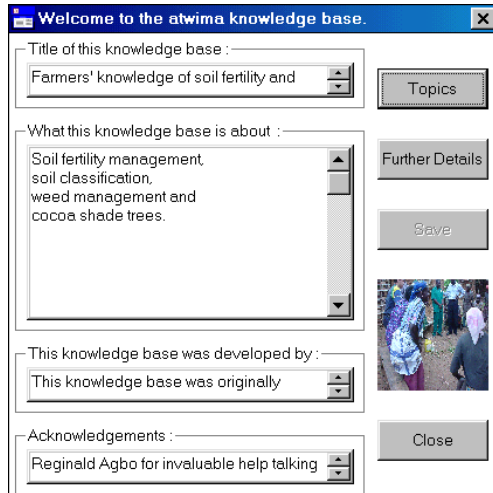
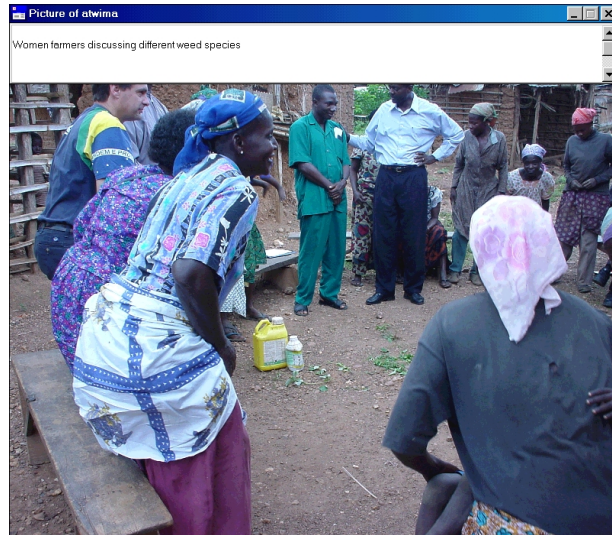


## CHAPTER ELEVEN - INCORPORATING PICTURES AND DIAGRAMS INTO THE KNOWLEDGE BASE

In AKT 5 there is the option to incorporate pictures and diagrams into the knowledge base. The Atwima knowledge base below shows what can be done. *Figure 11.1* shows the Welcome Page with a thumbnail picture. This picture can be enlarged by double clicking on the image with the left mouse button (*Figure 11.2*).

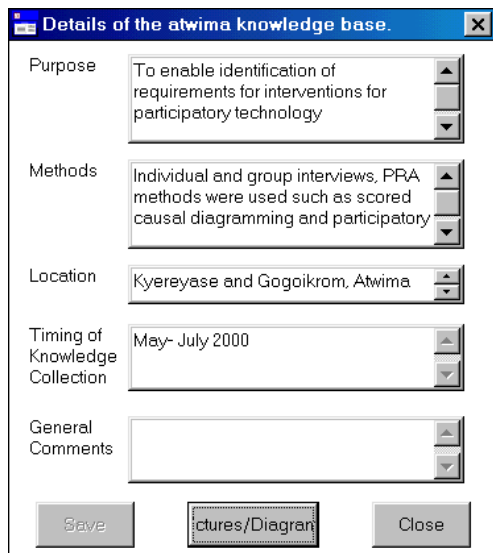


**Figure 11.1** Welcome Page of the Atwima knowledge base with the thumbnail picture

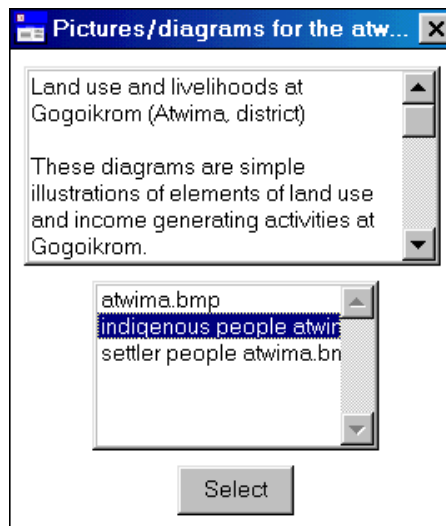


**Figure 11.2** The thumbnail picture enlarged with a description of the image

By pressing **Further Details**, the second part of the Welcome Page appears (*Figure 11.3*), at the bottom of which is a button **Pictures/Diagrams**. Selecting that button, a new dialog box appears (*Figure 11.4*) from which you can select one of the pictures or diagrams on the menu, by highlighting one and pressing **Select**.

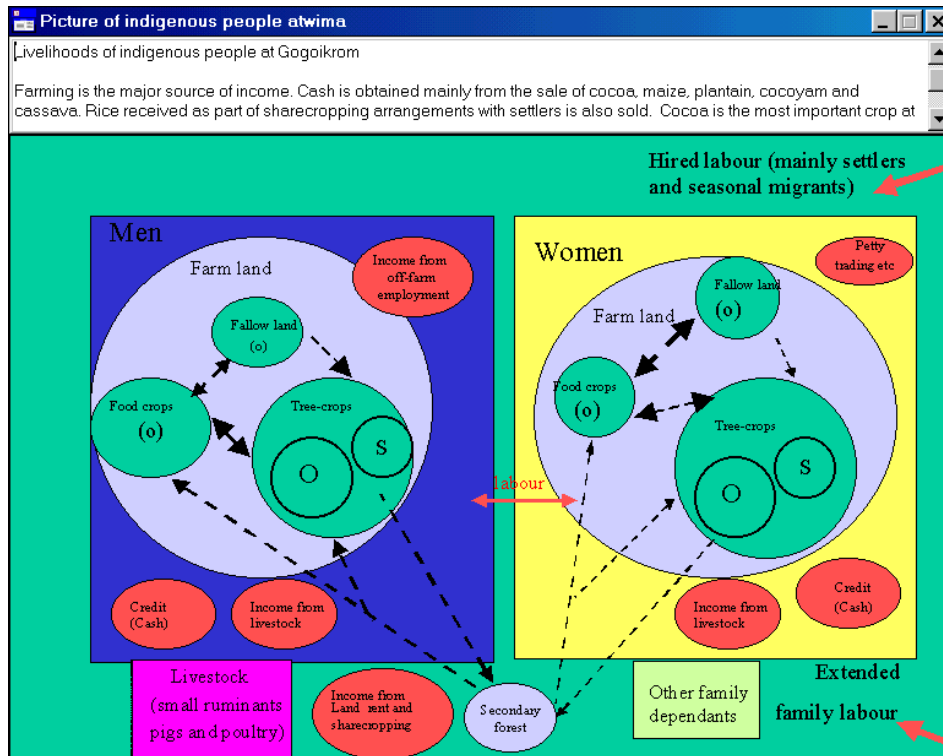


**Figure 11.3** The second part of the Welcome Page, with the Pictures/Diagrams button



**Figure 11.4** Selecting a diagram from the dialog box.

Figure 11.5 gives you the diagram<sup>1</sup> selected. There is also a memo field in which to explain the meaning of the diagram or picture, and its relevance to the knowledge base.



**Figure 11.5** An example of a diagram stored in the knowledge base, with an explanation in the memo field

In order to incorporate diagrams and pictures into a knowledge base, you must adhere to the following procedures:

- i) All the diagrams and pictures that are to be incorporated into the knowledge base must be in the form of bitmap files.
- ii) All these bitmap files must be in the same folder as the knowledge base.
- iii) The thumbnail picture or diagram to go on the Welcome Page must have exactly the same name as the knowledge base - in the above example atwima.bmp for the knowledge base atwima.kb
- iv) All the other pictures and diagrams must contain the name of the knowledge base somewhere within the file name e.g. indigenous people atwima.bmp; settler people atwima.bmp
- v) These file names will then automatically appear when you select **Pictures/Diagrams** in the second part of the Welcome Page.

<sup>1</sup> The diagrams in this chapter are taken from: Obiri-Darko, B., Ayisi-Jatango, J., Anglaaere, L., Cobbina, J., Moss, C., McDonald, M., Sinclair, F., and Young, E., 2000. Livelihood systems and farmers ecological knowledge in Ghana: a report on three districts. Shortened Bush-fallow Rotations for Sustainable Livelihoods in Ghana (DFID Project R7446). School of Agricultural and Forest Sciences University of Wales, Bangor, U.K.